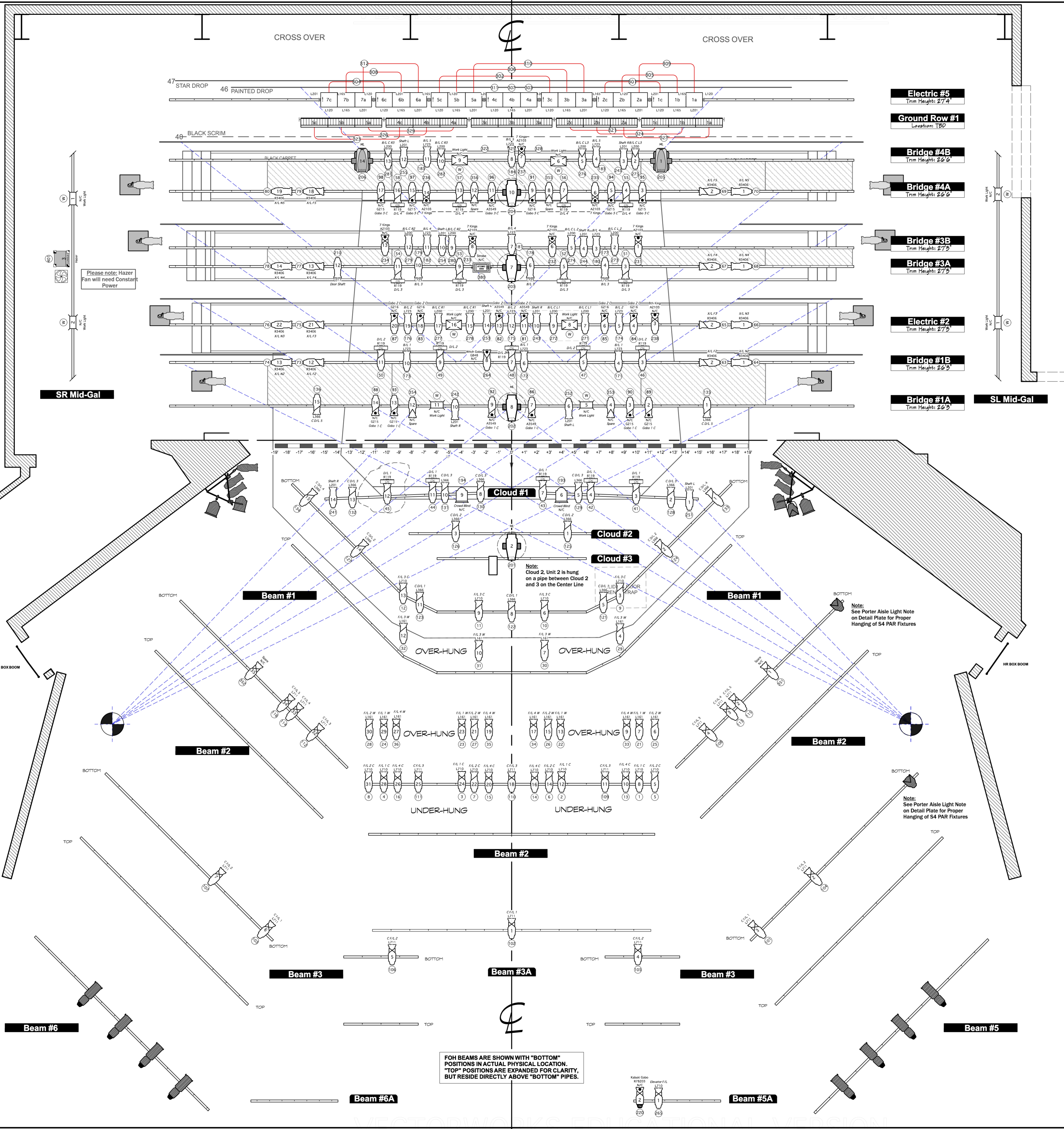


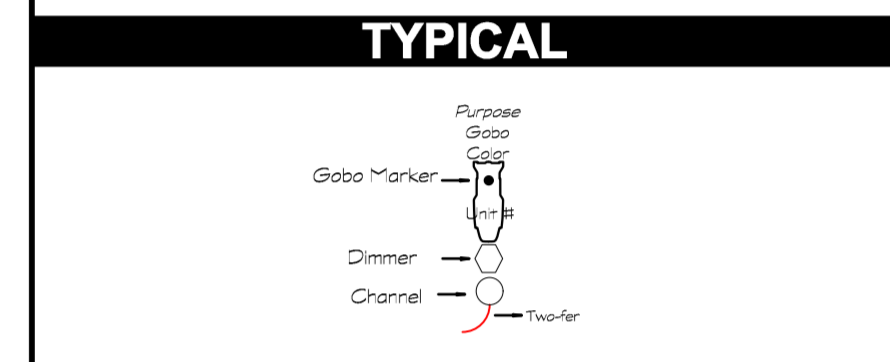
+28'-9"	30'0"	Star Drop	18m7"
+28'-3"	26'2"	Painted Drop	
+27'-0"	0'0"		
+26'-7"	0'0"		
+26'-0"	0'0"		
+25'-7"	0'0"		
+24'-0"	0'0"	Electric #5	
+23'-7"	0'0"	Black Scrim	
+23'-0"	0'0"	Border #4	
+22'-7"	0'0"	Bridge #4	
+22'-0"	0'0"	Bridge #4	
+21'-7"	0'0"	Bridge #4	
+21'-0"	0'0"	Bridge #4	
+20'-7"	0'0"		
+20'-0"	0'0"	Kabuki Drop	
+19'-7"	0'0"	Legs #3	
+19'-0"	0'0"	Border #3	
+18'-7"	0'0"		
+18'-0"	0'0"	Bridge #3	
+17'-7"	0'0"	Bridge #3	
+17'-0"	0'0"	Bridge #3	
+16'-7"	0'0"		
+16'-0"	0'0"	Legs #2	
+15'-7"	0'0"	Border #2	
+15'-0"	0'0"		
+14'-7"	0'0"	Focus Track #1	
+14'-0"	0'0"	Electric #2	
+13'-7"	0'0"		
+13'-0"	0'0"	Legs #1	
+12'-7"	0'0"	Border #1	
+12'-0"	0'0"	Bridge #1	
+11'-7"	0'0"	Bridge #1	
+11'-0"	0'0"	Bridge #1	
+10'-7"	0'0"	Hard Portal #1	
+10'-0"	0'0"	Valence	
+9'-7"	0'0"	House Curtain	



HOUSELIGHT DIMMERS	
Circuit Breaker: 408 & 410 lum house lights off over apron	
DIMMERS	DESCRIPTION
397	ORCHESTRA STAND LIGHTS
401, 411, 412	WALL WASHERS
413, 414, 415, 416, 417	AISLE LIGHTS
402, 403, 404, 405, 406, 407, 408, 409, 410, ???	OVERHEAD AUDIENCE LIGHTS

INSTRUMENT KEY	
	3 Fresnel, 100W
	6 Fresnel, 1000W
	8 Fresnel, 2KW
	SOURCE 4 PAR WFL, 575W
	ALTMAN QUITE, 1KW
	COLORTRAN, BRAD, 1KW
	SELADOR VIVO R
	ATOMIC 3000 STROBE
	FACE FOGGER
	UNIQUE 2.0 HAZER
	ANTARI HZ-500 HAZER
	HAZER FAN
	IN-LINE DUCT FAN

ACCESSORIES	
	TOP HAT
	7.5 BARN DOOR
	PIGEON PLATE
	IRIS
	CN SCROLLER
	12 SIDE ARM
	SOBO



NOTES

- Have ample cuts of R119 for all stages of focus.
- All units receive safety cable, color frame, & c-clamp unless otherwise noted.
- Dimmers assigned by Master Electrician prior to load-in.
- Master Electrician to provide blue light and cue light as needed prior to first tech.
- All color and templates to be dropped during load in.
- Double gels in gel frame with diffusion toward the lamp.
- No substitutions of equipment, color or templates without the designers approval.
- All instruments on 18" centers unless noted otherwise. Please reference Plate #5.
- Atomic 3000 Strobe set to 3-Channel Mode.

THIS DRAWING REPRESENTS DESIGN INTENT AND CONCEPT

THE DESIGNER AND ASSISTANT DESIGNERS ARE RESPONSIBLE FOR THE VISUAL ASPECTS OF THE PRODUCTION ONLY. ALL DRAWINGS RELATE SOLELY TO THE APPEARANCE OF THE DESIGN AND NOT TO MATTERS OF SAFETY OR STRUCTURAL STABILITY. THE IMPLEMENTATION OF THIS DESIGN MUST COMPLY WITH THE MOST STRINGENT APPLICABLE FEDERAL AND LOCAL SAFETY AND FIRE CODES. THE DESIGNER AND ASSISTANT DESIGNERS ARE NOT QUALIFIED TO PROVIDE ELECTRICAL OR STRUCTURAL APPROVALS OF THE DESIGN AND WILL NOT ASSUME ANY LIABILITY FOR DAMAGES RESULTING FROM IMPROPER ENGINEERING AND/OR IMPLEMENTATION IN THE HANDLING OF THIS DESIGN. THE DESIGNER AGREES TO MAKE ALTERATIONS TO ANY SPECIFICATIONS REQUIRED TO BE COMPLIANT WITH PROPER SAFETY PRECAUTIONS.

Lighting Designer
C.J. Mellides

787.580.1024 / C.MELLIDES@GMAIL.COM / WWW.CJ.MELLIDES.COM

DIRECTOR Brant Russel
STAGE MANAGER Shanice Caruthers
MASTER ELECTRICIAN Sarah Andersson
ASSISTANT LIGHTING DESIGNER Andrew Diamond
SCENIC DESIGNER Thomas Umfrid
COSTUME DESIGNER Risa Alecci

PRODUCED BY: UNIVERSITY OF CINCINNATI College-Conservatory of Music

VENUE: Patricia Corbett Theatre

REVISIONS		
C	Updated Plot with Corrections from Final Meeting	9/8/14 CJM
D	Final Plot Updates for Distribution	9/9/14 CJM
E	Adjusted Linesets for Bridge #4 and Electric #5 as per Scene Shop	9/12/14 CJM
F	Added Porter Lights, Connected Craning and Accessories	9/30/14APD

Macbeth

SHAKESPEARE'S **MACBETH**

October 2-5, 2014

Light Plot

DRAFTING BY	CJM, APD
VERSION	FINAL
DATE	12/2/14
FILE REF	Macbeth Light Plot FINAL.vw
PAPER SIZE	Arch D
SCALE	1/4" = 1'

1/5